

BORONIA Multipurpose Work Barge – CSL02



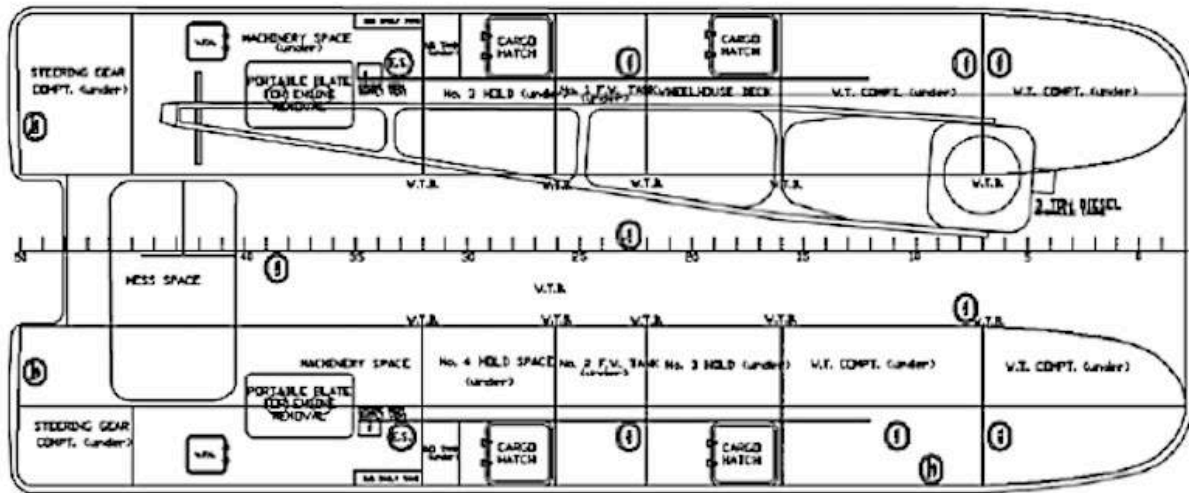
General Information		Capacities	
Registry	Australia	Fuel Oil	3,500 L
Classification	NSCV 2C	Fresh water	34,000 L
Build yard	Cockatoo Island	Clear deck space	180 m ²
Year	1972 – Refit 2016	Deck cargo	60 ton (inshore) 40 ton (offshore)
Trading area	Offshore to 30 NM		
Length overall	23.9 m		
Beam	10.0 m		
Design draft	1.66 m	Deck Equipment	
Lightship	111 tons	Crane	Favco SWL, 3 ton @14.5 m
Deadweight	73 tons	Tugger winch	Upon request to 10 ton
		Mooring system	Upon request - 4 point
Machinery		Navigation / Communication Equipment	
Propulsion	2 x conv. shaft drive	Radar system	Furuno 64 NM
Main engines	2 x Caterpillar D333C	Depth sounder	Furuno DFF1 600W
Total power	2 x 248 HP @ 1750 rpm	GPS	Furuno GP320B
Gearboxes	2 x Twin Disc MG509	Compass	Autonautic Inst. CHE-0078
Generator	8 KVA Powerlite	Chart Plotter	Furuno NavNet VX2
		AIS	Furuno FA-50
		VHF radio	Icom IC-M505 X 2
Performance		Cargo Pump	
Econ. Speed	8 knots @ 1600 rpm	Freshwater	Kelly & Lewis – 30 ton P/H
Bollard pull	4.5 tons		

Particulars given herein are without warranty as to the accuracy and interested parties must satisfy themselves by inspection or other means of details of the vessel.

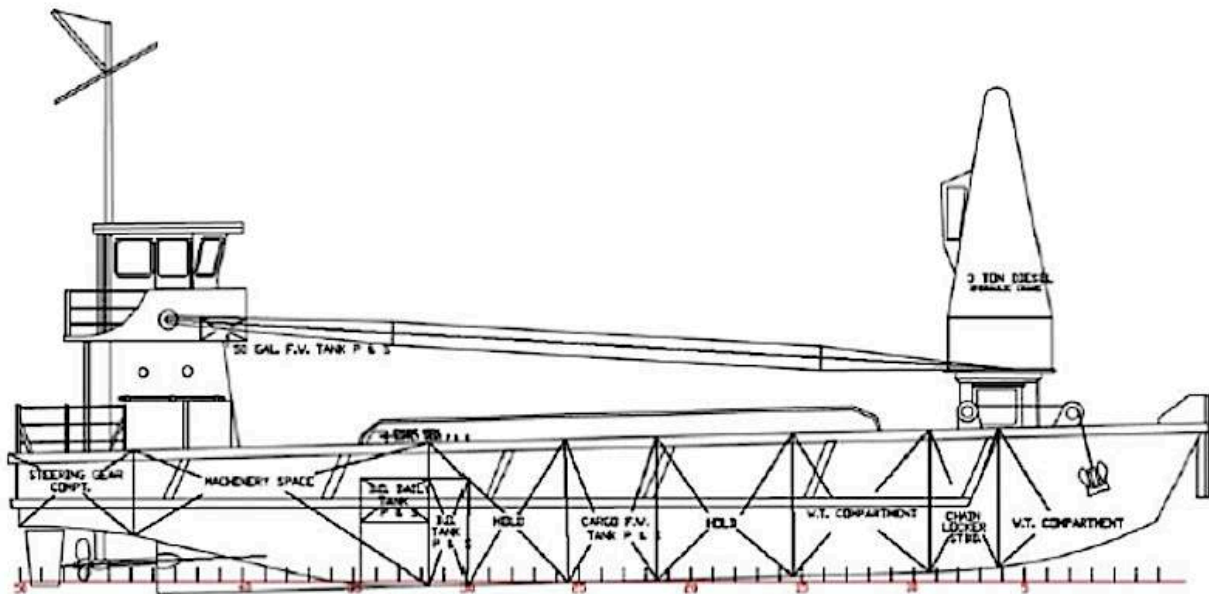
Boronia Marine Co
138 Cabarita Road
Cabarita NSW 2137
Ph: 8065 65 88 / 0410 900 040
www.boroniamarineco.com.au

 **Boronia**
Marine Co
ABN: 91 602 699 374

Main Deck



Side Profile



Particulars given herein are without warranty as to the accuracy and interested parties must satisfy themselves by inspection or other means of details of the vessel.

Boronia Marine Co
 138 Cabarita Road
 Cabarita NSW 2137
 Ph: 8065 65 88 / 0410 900 040
www.boroniamarineco.com.au

 **Boronia**
 Marine Co
 ABN: 91 602 699 374